

Eldas 2.0

Introduction

Eldas (Enterprise Level Data Access Services), developed by Edikt at the University of Edinburgh, is a solution to allow you to connect to distributed data resources using Web Services and Grid Services.

Supported Databases

Eldas can be used with the following databases: **MySQL**, **DB2**, **Oracle 9i**, **PostgreSQL** and **SqlServer**.

J2EE, EJB and JBoss

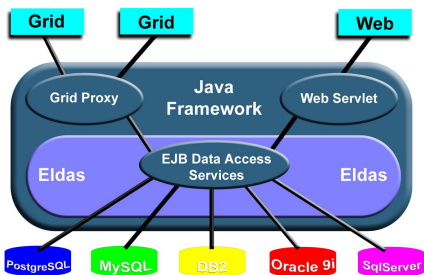
Eldas uses Java 2 Enterprise Edition (J2EE) and the JBoss Application Server to deliver an Enterprise Java Bean (EJB) based solution.

Security

Eldas uses https to secure its Web Services and GSI Message Level Security to secure its Grid Services.

Use Web or Grid Service Interfaces

J2EE and JBoss allows Eldas to use either Web or Grid Service Interfaces.



Quick and easy to deploy

1. Download Eldas

www.edikt.org/eldas

2. Unpack the distribution

On all platforms type:

```
java -jar UnpackEldas.jar
```

or **double-click** on Windows if the file-type is set.

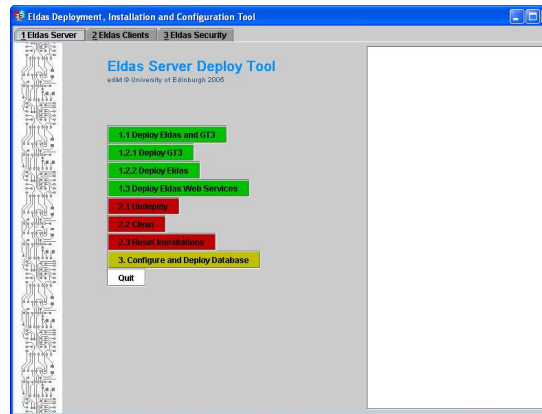
3. Run the Eldas Deploy Tool

On Solaris/Linux type:

```
java -jar InstallEldas.jar
```

or **double-click** on Windows if the file-type is set.

Use the Deploy Tool to install and deploy Eldas.



4. Configure Eldas

Chooses the databases you want to connect to your Eldas Server.

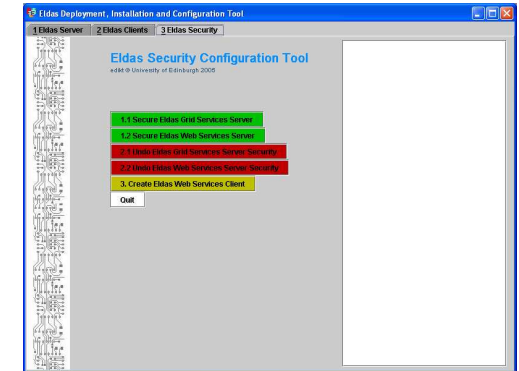
5. Start the JBoss Application Server

Eldas has been deployed and configured in minutes.

Other Features

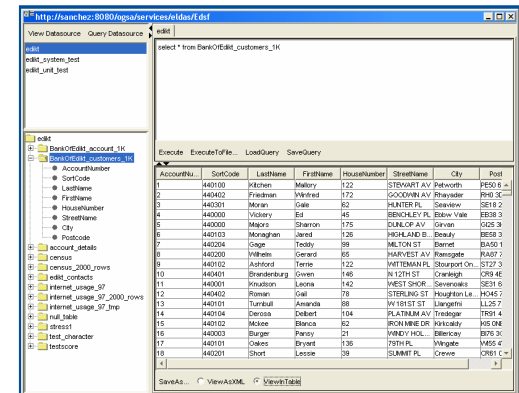
Security Configuration Tool

Eldas comes with a graphical tool to secure your Eldas Web and Grid data access services.



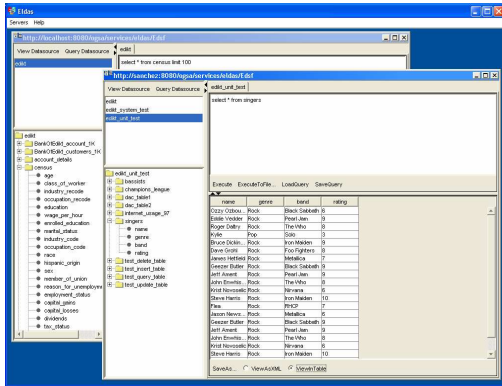
Eldas Query Tool

Quickly and easily supply SQL queries to any database connected to an Eldas Server using the graphical Eldas Query Tool.



Multiple Database Access

One Eldas Server instance can connect to many databases.



Data Streaming

Eldas can stream large queries from any database to your client's local disc - this ensures that a large dataset does not exceed your machine's memory.

Command Line Clients and API

Eldas is supplied with command line clients and an Application Programming Interface (API) to allow you to embed Eldas Data Access Services in your own software. Eldas uses an XML document based approach utilising the Web Services Description Language (WSDL).

Data Integration

Eldas can be used to allow integration, joins and distributed queries. This work is part of the EdSkyQuery project, in which Edikt are enabling astronomers to access large scale distributed databases.

Eldas Distribution

The Eldas 2.0 package contains the following:

- Eldas Server and Graphical Deploy Tool;
- Eldas Query Tool;
- Eldas command line clients;
- Eldas Security Module and configuration Tool;
- Eldas Install Guide and Manual.

Getting Eldas

Eldas 2.0 can be downloaded from the Edikt web site:

www.edikt.org/eldas

Documentation and background papers are also available to download.

Support

Eldas comes with comprehensive documentation. Further help can be obtained by emailing:

support@edikt.org

About Edikt

Edikt is based at the University of Edinburgh and is funded via a Scottish Higher Education Funding Council (SHEFC) grant to enable eScience through application of solid Software Engineering on cutting edge computing science and industry techniques.

More information on Edikt's current activities can be found on the Edikt website:

www.edikt.org

Documentation

For more comprehensive documentation, please see either:

- the PDFs `install.pdf` and `userGuide.pdf` under `server/eldas/docs` in the Eldas distribution;
- or our web pages at <http://www.edikt.org/eldas>.

The logo for Edikt, consisting of the word "edikt" in a bold, blue, lowercase sans-serif font.



© University of Edinburgh 2005